

For over 70 years the
Cauhé name has
represented Quality,
Safety and Value

Plate lifter



Clamshell Die Cutters

Puzzle Die Cutter with chop-up device



The GL Series Paper Cutter



Paper Drill



The GH series Paper Cutter,
with Multiple Paper Handling Options



CAUHE INDUSTRIES
Pol. Ind. El Campillo, C/ Alemania 1
50800 Zuera, Zaragoza (Spain)

Phone: +34 669 671142
juan@cauhe-industries.com
www.cauhe-industries.com



Simplacutter
POWERPRESS



Quality, Safety and Dependability



Simplacutter
POWERPRESS

CLAMSHELL DIE CUTTER

General information

Our clamshell die cutters are designed to die cut many different types of materials like "Foam board" up to 6 mm thick, "laminated board" up to 3 mm thick, corrugated board up to 15 mm thick, all types of fine cardboard and paper, kiss-cut adhesive labels, wooden and soft metal sheets, depending on the thickness of the material and the amount of cutting knives and several types of plastics up to 3 mm thick...

Our machines leave the factory to work with 23.8 mm (0.937") to 30 mm (1.18") full height wood backed steel rule dies. Upon request we can custom manufacture our machines to accept any special size cutting rule.

We produce a wide range of models and can build any special size upon demand.

Input from our dedicated craftsmen and valued special requests from our clients has lead us to develop an extensive range of options. Our options are designed to be installed on both new and existing machines at our customers premises.

Each customer can pick the best options that meets their particular needs.



CLAMSHELL DIE CUTTER

SAFETY accessories

Laser scanners and other safety systems

Cauhe clamshell die cutters are sold worldwide and are design to meet or exceed the Stricteest Safety Standards. Our safety systems meet the Standards UNE EN 1010-5 and UNE EN ISO 13849-1 and provide the maximum performance level of security (Plc). Our machines comply with other country specific safety regulations like ANSI B65.5 in the USA.

The latest addition in safety systems is the **laser scanner**. This type of scanner system has been successfully tested on clamshell style die cutters since 2000. Our safety scanner system can be used to replace side **tables**, side **fences** or side **safety mats**, although the upcoming Safety Standards will impose them to be used as an integral security system for the entire machine. Placing one laser-scanner on each side of the machine prevents access from the sides and placing one unit at the top prevents front access and safely covers the danger zones leaving just a safe gap above the moving platen to feed and deliver the materials keeping the operator as safe as possible.



CLAMSHELL DIE CUTTER

SAFETY accessories

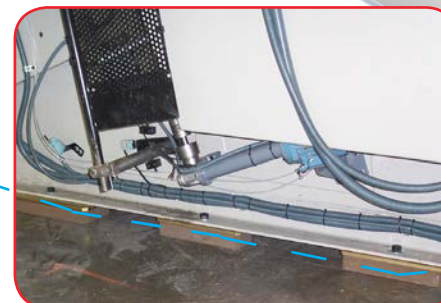
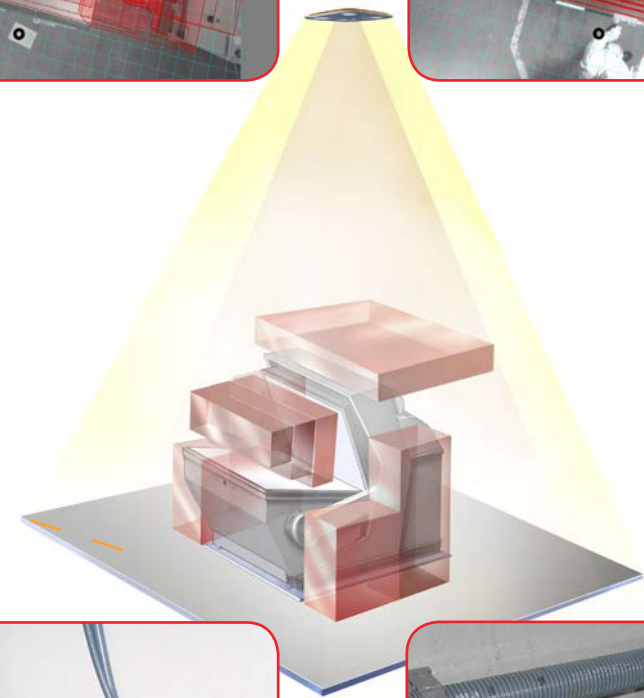
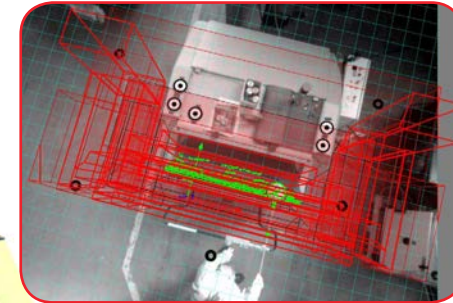
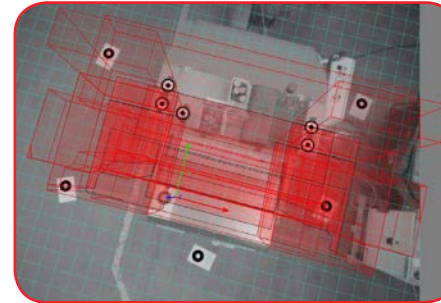
3D integrated safety system

Our ongoing research of new safety systems and collaboration with manufacturers of electronic safety products, makes us the world leader in the development of new safety solutions for these type machines. The main image is a prototype **3D integrated safety system** that controls all machine safety, still under development in cooperation with the German company PILZ.

Anti-vibration mountings

There are several ways to set our machines in position. The most common is to anchor it to the floor by bolts or chemical anchors, but we recommend using **anti-vibration mountings**, specially designed for these machines.

They prevent the machine from moving away and avoid the vibration produced in each punching stroke, to be transmitted to the company floor. Using anti-vibration mountings, the machine installation is faster. Keeping the machine elevated a few inches from the floor allows for better cleaning around the machine area.



CLAMSHELL DIE CUTTER

OPERATING the machine

Machine controls

We offer each customer the opportunity to decide where to locate the machine controls. The safety knee bar has the main working controls, leaving the rest of the controls used only for setting up a job in the main cabinet. These setting controls can be placed in the main cabinet of the machine, in the safety knee bar or on the **overhead operator control panel** located above the machine. The overhead control can be moved from side to side to suit the operators needs.

Optional electronic speed control unit

With the electronic speed control unit the machine speed can be adjusted + / - 20% of the rated speed to suit the needs of each job or the capabilities of each operator.



CLAMSHELL DIE CUTTER

OPERATING the machine

Automatic lubrication system

The automatic lubrication system's program insures the machine receives the proper amount of lubrication at the scheduled time, allowing the operator to continue working uninterrupted. The system contains sensors to detect low oil and will stop the machine if a no oil or pressure event is detected.

Preset counter

Optional preset batch counter. The easily programmed batch counter is equipped with a large digital screen for easy viewing. The counter counts down one sheet per machine stroke from a preset value set by the operator. Once it reaches zero, the system beeps and starts to count down from the preset value again.

Accessibility for everyone

Realizing that some of our customers may employ special needs workers, we can manufacture our machines to fit any particular need as well as meeting any specific requirements so that all individuals can work efficiently and safely.



CLAMSHELL DIE CUTTER

Valuable Accessories to improve production

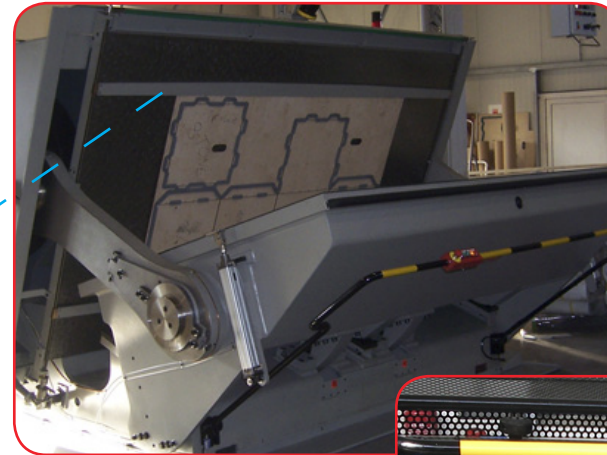
We have a wide range of options to help the operator lower make-ready time:

Cutting die fixing options

Minimizing the cutting die change over time when starting a new job is possible with our optional automatic chase systems. These systems can be single or double type. The latter allows the cutting die to be moved up or down. It can be operated by a hand wheel, by a pneumatic motor or by an electric motor. We can also manufacture it with a **standard chase frame** so the frame can be removed to **maximize the cutting die size**. Any of the above options can be fitted to meet a particular need

Pneumatic cutting plate lifter

Minimizes the make-ready time when setting up a new job. The optional **pneumatic cutting plate lifter** raises the cutting plate to allow the operator fast and easy access to the setup sheet which speeds up the make-ready process.





Quality, Safety and Dependability



Simplacutter
POWERPRESS

CLAMSHELL DIE CUTTER

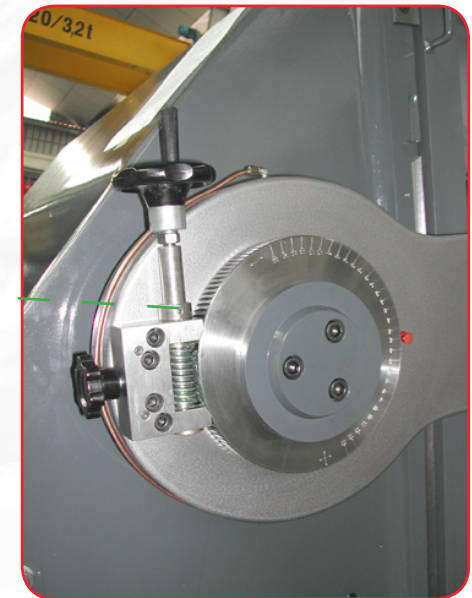
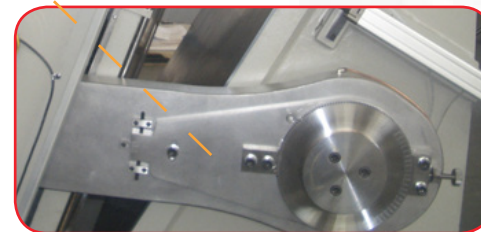
Valuable Accessories to improve production

Lay-on sheet bands

Reduce make-ready time by using the optional **sheet band guide** system it's easily adjusted to fit any size sheet.

Cutting pressure adjustment

One of the most time consuming tasks to perform when setting up a new job is adjusting the cutting pressure. **Normally pressure adjustment** is performed manually with tools by unlocking and turning the micro-fine eccentric gear and often the operator will need to change the pressure setting several times during each make-ready which consumes valuable time. We provide two options to reduce pressure adjustment time, our exclusive motorized pressure adjustment system and our **hand wheel adjustment system**. **Cauhé** is the only clamshell die cutter manufacturer in the world to offer an optional **motorized pressure adjustment system**. The operator simply presses a button to raise or lower cutting pressure. Our second option is a hand wheel pressure adjustment system. No tools need for either pressure adjustment system.



CLAMSHELL DIE CUTTER

Accessories to work with hot dies and foil stamping

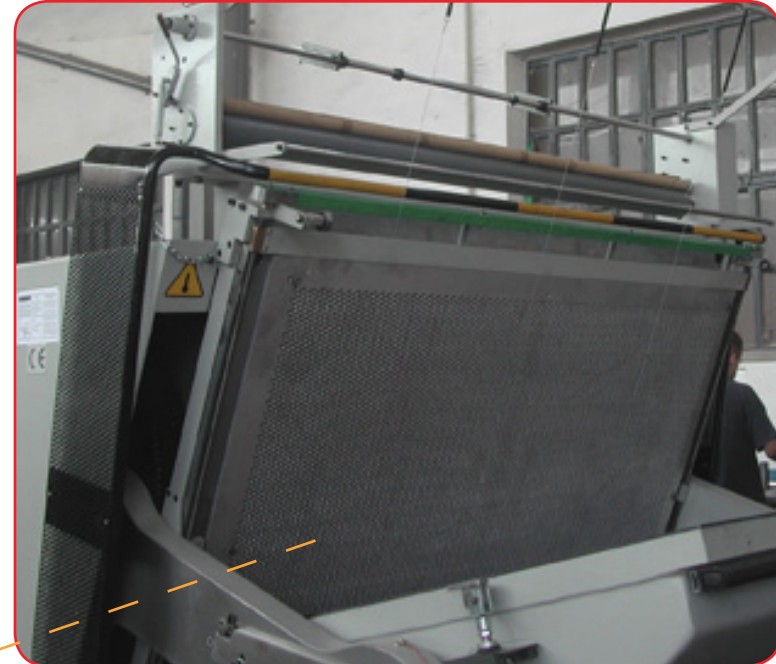
Our optional die heating system allows the operator to work with less cutting pressure and at the same time obtain a higher quality finish on many types of plastic, styrene and *vinyl* materials. Easily programmable heat zone controls allow the operator to rapidly adjust die heater temperature.

Customers that have materials that need to be pre-heated before die cutting would benefit from our optional second heating unit installed in the moving platen.

Clients requiring **foil stamping** capabilities would greatly benefit from our optional foil stamping system. The foil's fed from the roller stand at the rear of the machine up to the used foil collection rewind unit located on top of the machine. We can provide as many rewinding units as needed.

Our one touch control screen allows for fast and accurate adjustments for the foil speed and stroke of each individual foil roller.

Our removable **honeycomb plate** allows the operator the ability to die cut or foil stamp with one machine.



CLAMSHELL DIE CUTTER

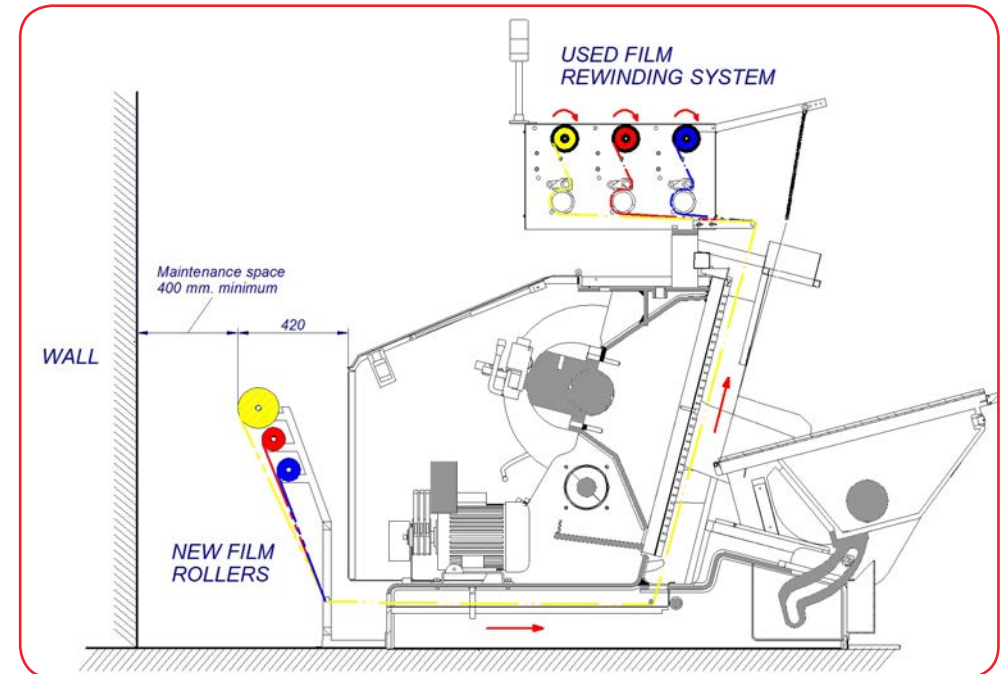
Accessories to work with hot dies and foil stamping

Our honeycomb plates are designed to be easily installed or removed for foil stamping or die cutting. We can manufacture the honeycomb plate to fit any kind of automatic chase which allows the operator to fit it as easy and fast as fitting a cutting die.

And If the machine's equipped with the double chase system the honeycomb plate can be moved up or down with the foil stamping die already attached to adjust it to the correct position minimizing make-ready time.

We can install a second dwell timer to stop the moving platen at the point of impression and restart it after a preset time to do special jobs like thick creasing etchings etc...

Some applications may require the installation of different filling plates in the stationary platen or the moving platen that can be removed when it is necessary to work with thick material like book covers.





Quality, Safety and Dependability



Simplacutter
POWERPRESS

Características generales de las troqueladoras pequeñas y medianas - Small and medium die cutters main characteristics

Caractéristiques générales des pletines petits et moyens - Allgemeine Eigenschaften kleiner und mittlerer Stanzmaschinen

Modelo - Model - Modèle - Modell		00	0	0A	I	IA	II	IIA	III	IV	IVA	V	VA	VI	VIC
Formato - Format - Format - Format	cm	46x66	55x77	65x86	65x95	72x102	82x112	90x122	100x140	110x160	120x160	120x180	140x180	120x200	150x200
	inch	18,1x26	21,6x30,3	25,6x33,9	25,6x37,4	28,3x40,2	32,3x44,1	35,4x48	39,4x55,1	43,3x63	47,2x63	47,2x70,9	55,1x70,9	47,2x78,7	59x78,7
Serie - Serie - Serie - Serie		--	--	S65			--	--	--	--	S120		S140	S120	S150
Peso - Weight - Poids - Gewicht	Kg	2000	3000	3300	3500	4000	4400	5000	6000	8000	10000	11000	12000	12000	14200
Ancho - Width - Large - Breite	mm	1150	1260	1380	1470	1520	1640	1750	1860	2020	2070	2270	2320	2470	2540
Largo de la máquina cerrada para el transporte - Machine length closed (transport) - Longueur machine fermé - Länge geschlossener Maschinen zum Transport															
	mm	1120	1635	1230	1230	1670	1700	1710	1790	1900	2050	2050	2150	2050	2260
Largo de la máquina abierta - Machine length open - Longueur machine ouvert - Länge geöffneter Maschinen															
	mm	1450	1925	1580	1580	2080	2170	2170	2470	2600	2780	2760	2900	2760	3040
Alto - Height - Haut - Höhe	mm	1100	1150	1200	1200	1240	1245	1315	1390	1570	1690	1690	1780	1690	1780
Presión - Cutting pressure	tm	150	250	250	250	300	350	350	400	400	450	450	500	450	500
Pression - Druck	tm/dm2	3	3	3	3	2,8	2,5	2,3	2	2	2	1,75	1,75	1,6	1,5
Consumo de aire - Air consumption - consommation d'air - Luftverbrauch															
	dm ³	0,145	0,145	0,276	0,276	0,276	0,276	0,276	0,276	0,276	0,43	0,43	0,43	0,43	0,43
Potencia del motor - Motor power	kw	2,2	3	3	3	4	4	4	5,5	7,5	11	11	15	15	19
Puissance du moteur - Motorleistung	cv	3	4	4	4	5,5	5,5	5,5	7,5	10	15	15	20	20	26,6
Velocidad mecánica - Mechanical speed - Vitesse sans variateur - Mechanische Geschwindigkeit															
	h/h (s/h)	800	1400				1200				760				
Velocidad con variador de velocidad - Speed approx. With speed control unit - Vitesse avec variateur - Geschwindigkeit mit Geschwindigkeitsregler															
	h/h (s/h)	640~960	1120~1680				960~1440				640~915				
Tamaño máximo de hoja - Maximum sheet size - Dimension maximum de la feuille - Maximale Blattgröße															
	mm	500x700	600x830	690x900	690x990	770x1080	840x1170	910x1240	1030x1460	1140x1660	1240x1650	1240x1850	1440x1850	1240x2050	1490x2050
	inch	19,7x27,6	23,6x32,7	27,2x35,4	27,2x39	30,3x42,5	33,1x46	35,8x48,8	40,5x57,5	44,9x65,3	48,8x65	48,8x72,8	56,7x72,8	48,8x80,7	58,7x80,7
Área máxima de corte - Maximum size of cutting area (inside screws) - Zone maximum de coupe (intérieur de vis) - Maximaler Schneidbereich															
	mm	484x689	563x794	664x872	664x962	722x1034	812x1148	884x1214	995x1424	1115x1622	1202x1613	1202x1815	1392x1815	1202x2004	1459x2004
	inch	19x27,1	2,22x31,3	26,1x34,3	26,1x37,9	28,4x40,7	32x45,2	34,8x47,8	39,2x56,1	43,9x63,9	47,3x63,5	47,3x71,5	54,8x71,5	47,3x78,9	57,4x78,9
Medida de la chapa de corte - Cutting plate measures - Mesure de la tôle de coupe - Abmessung des Schneidblechs															
	mm	525x730	610x840	705x910	705x1000	768x1080	857x1186	922x1260	1043x1475	1156x1678	1250x1660	1250x1860	1440x1860	1250x2060	1500x2060
	inch	20,7x28,7	24x33,1	27,8x36	27,8x39,4	30,2x42,5	33,7x46,7	36,3x49,6	41,1x58,1	45,5x66,1	49,2x65,3	49,2x73,2	56,7x73,2	49,2x81,1	59,1x81,1

Formato interior de los diferentes tipos de rama y características de la placa calefactora de las troqueladoras pequeñas y medianas

Small and medium die cutters inside standard chase format and heating plate device - Format intérieur de différents types de chassis et caractéristiques de la plaque de chauffage des pletines petits et moyens

Innenformat der einzelnen Schließrahmenarten und Eigenschaften der Heizplatten der kleiner und mittlerer Stanzmaschinen

Modelo - Model - Modèle - Modell		00	0	0A	I	IA	II	IIA	III	IV	IVA	V	VA	VI	VIC
Formato - Format - Format - Format	cm	46x66	55x77	65x86	65x95	72x102	82x112	90x122	100x140	110x160	120x160	120x180	140x180	120x200	150x200
	inch	18,1x26	21,6x30,3	25,6x33,9	25,6x37,4	28,3x40,2	32,3x44,1	35,4x48	39,4x55,1	43,3x63	47,2x63	47,2x70,9	55,1x70,9	47,2x78,7	59x78,7
Serie - Serie - Serie - Serie		--	--	S65			--	--	--	--	S120		S140	S120	S150

Rama estándar - Inside chase measures - Chassis standard - Standardschließrahmen

	cm	46x66	55x77	65x86	65x95	72x102	82x112	90x122	100x140	110x160	120x160	120x180	140x180	120x200	150x200
	inch	18,1x26	21,6x30,3	25,6x33,9	25,6x37,4	28,3x40,2	32,3x44,1	35,4x48	39,4x55,1	43,3x63	47,2x63	47,2x70,9	55,1x70,9	47,2x78,7	59x78,7

Rama simple con husillos fija - Single automatic fixed - Simple avec vis, fixe - Einfacher fester Schließrahmen mit Spindeln

	mm	--	--	--	--	750x1050	840x1155	935x1255	1035x1435	1135x1655	1230x1660	1230x1860	1415x1860	1230x2060	1525x2060
	inch	--	--	--	--	29,5x41,3	33,1x45,5	36,8x49,4	40,7x56,5	44,7x65,2	48,4x65,3	48,4x73,2	55,7x73,2	48,4x81,1	60x81,1

Rama simple con husillos extraíble - Single automatic removable - Simple avec vis d'extraction - Einfacher ausziehbarer Schließrahmen mit Spindeln

	mm	390x612	500x746	600x836	600x922	670x993	750x1093	830x1193	930x1374	1030x1574	1130x1574	1130x1774	--	1130x1974	--
	inch	15,4x24,1	19,7x29,4	23,6x32,9	23,6x36,3	26,4x39,1	29,5x43	32,7x47	36,6x54,1	40,6x62	44,5x62	44,5x69,8	--	44,5x77,7	--

Rama doble con husillos fija - Double automatic fixed - Double avec vis, fixe - Doppelter fester Schließrahmen mit Spindeln

	mm	--	--	--	--	750x1020	840x1125	935x1225	1035x1405	1135x1625	1230x1630	1230x1830	1415x1830	1230x2030	1525x2030
	inch	--	--	--	--	29,5x40,2	33,1x44,3	36,8x48,2	40,7x55,3	44,7x64	48,4x64,2	48,4x72	55,7x72	48,4x79,9	60x79,9

Rama doble con husillos extraíble - Double automatic removable - Double avec vis d'extraction - Doppelter ausziehbarer Schließrahmen mit Spindeln

	mm	390x582	500x716	600x806	600x892	670x963	750x1063	830x1193	930x1344	1030x1544	1130x1544	1130x1744	--	1130x1944	--
	inch	15,4x22,9	19,7x28,2	23,6x31,7	23,6x35,1	26,4x37,9	29,5x41,9	32,7x47	36,6x52,9	40,6x60,8	44,5x60,8	44,5x68,7	--	44,5x76,5	--

Nº de resistencias - Nr of heating elements - Nombre de résistance - Nr Widerstände

		9				12				15				
Longitud - Long - largeur - Länge	mm	460	550	650	720	820	900	1000	1100	1200	1200	1400	1200	1500

Potencia unitaria - Unit power - Puissance par unité - Einzelleistung

	w	1000	700*/1000	1000				1200			
--	---	------	-----------	------	--	--	--	------	--	--	--

Potencia total - Total power - Puissance Total - Gesamtleistung

	w	9000				12000				18000			
--	---	------	--	--	--	-------	--	--	--	-------	--	--	--

Nº de zonas y reguladores para troquelar - Nr of zones and regulators for die cutting - Régulateur et zones de couper - Bereichzahl und Regler zum Prägen

		3 / 1													
--	--	-------	--	--	--	--	--	--	--	--	--	--	--	--	--

Nº de zonas y reguladores para estampar - Nr of zones and regulators for foil stamping - Régulateur et zones Stampage - Bereichzahl und Regler zum Stanzen

		3 / 3													
--	--	-------	--	--	--	--	--	--	--	--	--	--	--	--	--

Temperatura máxima - Maximum temperature - Temperature maximale - Maximale Temperatur: 180°

Temperatura recomendable para troquelar - Recommended temperature for die cutting - Temperature recommandable pour de couper - Empfohlene Prägetemperatur: 90°

Temperatura recomendable para estampar - Recommended temperature for foil stamping - Temperature recommandable pour le stampage - Empfohlene Stanztemperatur: 120°



Quality, Safety and Dependability



Simplacutter
POWERPRESS

Características generales de las troqueladoras grandes - Big die cutters main characteristics

Caractéristiques générales des grands pletines - Allgemeine Eigenschaften große Stanzmaschinen

Modelo - Model - Modèle - Modell		VII	VIIC	VIIH	VIID	VIIA	VIII	VIIIC	IXA	IX	X	XG	XD
Formato - Format - Format - Format	cm	150x250	160x220	165x220	160x250	165x250	160x300	165x300	180x250	180x320	200x250	200x330	205x350
	inch	59x98,4	63x86,6	65x86,6	63x98,4	65x98,4	63x118,1	65x118,1	70,8x98,4	70,8x126	78,7x98,4	78,7x129,9	80,7x137,8
Serie - Serie - Serie - Serie		S150	S160				S180			S200		S210	
Peso - Weight - Poids - Gewicht	Kg	16000	16100	16400	17000	17400	19000	19600	20500	24000	22000	28000	29200
Ancho - Width - Large - Breite	mm	3040	2800		3100		3600		3100	3800	3100	3900	4100
Largo de la máquina cerrada para el transporte - Machine length closed (transport) - Longueur machine fermé - Länge geschlossener Maschinen zum Transport													
	mm	2260	2300						2600				
Largo de la máquina abierta - Machine length open - Longueur machine ouvert - Länge geöffneter Maschinen													
	mm	1450	3250	3280	3250	3280	3250	3280	3540		3880		3950
Alto - Height - Haut - Höhe	mm	2100	2150	2170	2150	2170	2150	2170	2400		2600		2640
Presión - Cutting pressure	tm	500											
Pression - Druck	tm/dm2	1,5						1,4		1,3		1,2	
Consumo de aire - Air consumption - consommation d'air - Luftverbrauch													
	dm ³	0,43	0,58										
Potencia del motor - Motor power	kw	22											
Puissance du moteur - Motorleistung	cv	30											
Velocidad mecánica - Mechanical speed - Vitesse sans variateur - Mechanische Geschwindigkeit													
	h/h (s/h)	760	780				720			650			
Velocidad con variador de velocidad - Speed approx. With speed control unit - Vitesse avec variateur - Geschwindigkeit mit Geschwindigkeitsregler													
	h/h (s/h)	640~915	650~930				640~960			540~780			
Tamaño máximo de hoja - Maximum sheet size - Dimension maximum de la feuille - Maximale Blattgröße													
	mm	1490x2550	1590x2250	1640x2250	1590x2550	1640x2550	1590x3050	1640x3050	1790x2550	1790x3250	1990x2550	1990x3350	2040x3550
	inch	58,7x100,4	62,6x88,6	64,6x88,6	62,6x100,4	64,6x100,4	62,6x120,1	64,6x120,1	70,5x100,4	70,5x128	78,3x100,4	78,3x131,9	80,3x139,8
Área máxima de corte - Maximum size of cutting area (inside screws) - Zone maximum de coupe (intérieur de vis) - Maximaler Schneidbereich													
	mm	1459x2504	1559x2204	1610x2204	1559x2504	1610x2504	1559x3004	1610x3004	1760x2504	1760x3204	1960x2504	1960x3304	2010x3504
	inch	57,4x98,6	61,4x86,8	63,4x86,8	61,4x98,6	63,4x98,6	61,4x118,3	63,4x118,3	69,3x98,6	69,3x126,1	77,2x98,6	77,2x130,1	79,1x138
Medida de la chapa de corte - Cutting plate measures - Mesure de la tôle de coupe - Abmessung des Schneidblechs													
	mm	1500x2560	1600x2260	1650x2260	1600x2560	1650x2560	1600x3060	1650x3060	1800x2560	1800x3260	2000x2560	2000x3360	2050x3560
	inch	59x100,8	63x89	65x89	63x100,8	65x100,8	63x120,5	65x120,5	70,9x100,8	70,9x128,3	78,7x100,8	78,7x132,3	80,7x140,1



Quality, Safety and Dependability



Simplacutter
POWERPRESS

Formato interior de los diferentes tipos de rama y características de la placa calefactora de las troqueladoras grandes - Big die cutters inside standard chase format and heating plate device

Format intérieur de différents types de chassis et caractéristiques de la plaque de chauffage des grands pletines

Innenformat der einzelnen Schließrahmenarten und Eigenschaften der Heizplatten der große Stanzmaschinen

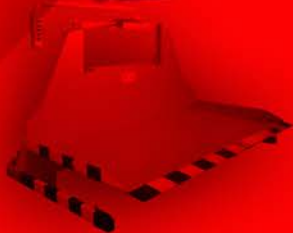
Modelo - Model - Modèle - Modell		VII	VIIC	VIIH	VIID	VIIA	VIII	VIIIC	IXA	IX	X	XG	XD
Formato - Format - Format - Format	cm	150x250	160x220	165x220	160x250	165x250	160x300	165x300	180x250	180x320	200x250	200x330	205x350
	inch	59x98,4	63x86,6	65x86,6	63x98,4	65x98,4	63x118,1	65x118,1	70,8x98,4	70,8x126	78,7x98,4	78,7x129,9	80,7x137,8
Serie - Serie - Serie - Serie		S150	S160				S180			S200		S210	
Rama estándar - Inside chase measures - Chassis standard - Standardschließrahmen													
	cm	150x250	160x220	165x220	160x250	165x250	160x300	165x300	180x250	180x320	200x250	200x330	205x350
	inch	59x98,4	63x86,6	65x86,6	63x98,4	65x98,4	63x118,1	65x118,1	70,8x98,4	70,8x126	78,7x98,4	78,7x129,9	80,7x137,8
Rama simple con husillos fija - Single automatic fixed - Simple avec vis, fixe - Einfacher fester Schließrahmen mit Spindeln													
	mm	1525x2560	1660x2260	1710x2260	1660x2560	1710x2560	1660x3060	1710x3060	1860x2560	1860x3260	2060x2560	2060x3360	2110x3560
	inch	60x100,8	65,3x89	67,3x89	65,3x100,8	67,3x100,8	65,3x120,5	67,3x120,5	73,2x100,8	73,2x128,3	81,1x100,8	81,1x132,3	83,1x140,2
Rama simple con husillos extraíble - Single automatic removable - Simple avec vis d'extraction - Einfacher ausziehbarer Schließrahmen mit Spindeln													
	mm	--	--	--	--	--	--	--	--	--	--	--	--
	inch	--	--	--	--	--	--	--	--	--	--	--	--
Rama doble con husillos fija - Double automatic fixed - Double avec vis, fixe - Doppelter fester Schließrahmen mit Spindeln													
	mm	1525x2530	1660x2230	1710x2230	1660x2530	1710x2530	1660x3030	1710x3030	1860x2530	1860x3230	2060x2530	2060x3330	2110x3530
	inch	60x99,6	65,3x87,8	67,3x87,8	65,3x99,6	67,3x99,6	65,3x119,3	67,3x119,3	73,2x99,6	73,2x127,2	81,1x99,6	81,1x131,1	83,1x139
Rama doble con husillos extraíble - Double automatic removable - Double avec vis d'extraction - Doppelter ausziehbarer Schließrahmen mit Spindeln													
	mm	--	--	--	--	--	--	--	--	--	--	--	--
	inch	--	--	--	--	--	--	--	--	--	--	--	--
Nº de resistencias - Nr of heating elements - Nombre de résistance - Nr Widerstände													
		18	15		18		30		18	30	18	30	
Longitud - Long - largeur - Länge	mm	1500	1600	1650	1600	1650	1600	1650	1800		2000		2050
Potencia unitaria - Unit power - Puissance par unité - Einzelleistung													
	w	1200	1500										
Potencia total - Total power - Puissance Total - Gesamtleistung													
	w	27000	22500		27000		45000		27000	45000	27000	45000	
Nº de zonas y reguladores para troquelar - Nr of zones and regulators for die cutting - Régulateur et zones de'couper - Bereichzahl und Regler zum Prägen													
		3 / 1				3x2 / 3		3 / 1	3x2 / 3	3 / 1	3x2 / 3		
Nº de zonas y reguladores para estampar - Nr of zones and regulators for foil stamping - Régulateur et zones Stampage - Bereichzahl und Regler zum Stanzen													
		3 / 3				3x2 / 3		3 / 1	3x2 / 3	3 / 1	3x2 / 3		

Temperatura máxima - Maximum temperature - Temperature maximale - Maximale Temperatur: 180°

Temperatura recomendable para troquelar - Recommended temperature for die cutting - Temperature recommandable pour de'couper - Empfohlene Prägetemperatur: 90°

Temperatura recomendable para estampar - Recommended temperature for foil stamping - Temperature recommandable pour le stampage - Empfohlene Stanztemperatur: 120°

Plate lifter



Clamshell Die Cutters



Paper Drill



Puzzle Die Cutter with chop-up device



For over 70 years the
Cauhé name has
represented Quality,
Safety and Value



The GH series Paper Cutter,
with Multiple Paper Handling Options



The GL Series Paper Cutter



CAUHE INDUSTRIES

C/ Alemania 1

Pol. Ind. El Campillo,

50.800 - Zuera - Zaragoza

SPAIN

Phone: +34 669 67 11 42

juan@cauhe-industries.com

www.cauhe-industries.com



Simplacutter
POWERPRESS