

Folder Gluer for short-run Folding Cartons



GREAT PROFILE:

- › Folding + Gluing of:
 - › Straight-line boxes
 - › Automatic boxes (crash-lock)
 - › Slip-lid boxes
- › Automated pre-setting of the entire production line (in transverse + longitudinal direction) with the unique APA-system (Automated Plough length Adjustment)
- › Very fast job change
- › Network Integration via JDF/JMF
- › Pre-breaking
- › Lower gluing unit with high precision
- › Gluing line inspection with rejector (option)
- › Inline Braille unit (option, Q3/15)
- › Visual inspection with rejector (option, planned)



Speedy job change thanks to automated set-up

NEW

Folder Gluer KAMA FlexFold 52

Technical data

Cardboard	180-600 gsm (microns)
Microflute	0.4-0.9 mm (1/64-1/32 in)
Performance	200 m/min
Size (LxW)	9700x1200 mm (380x47 in)

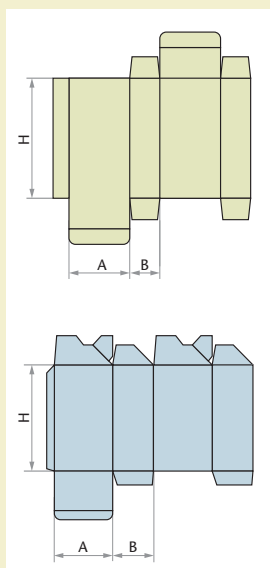
Straight-line boxes

B	min 10 mm (3/8 in)
A + B	min 40 mm (1 9/16 in)
A + B	max 250 mm (10 in)
H	min 50 mm (2 in)
H	max 230 mm (9 in)

Crash-lock boxes

B	min 35 mm (1 3/8 in)
A + B	min 70 mm (2 3/4 in)
A + B	max 250 mm (10 in)
H	min 50 mm (2 in)
H	max 230 mm (9 in)

FOLDING + GLUING OF FOLDING CARTON BOXES WITH VARIOUS SHAPES:

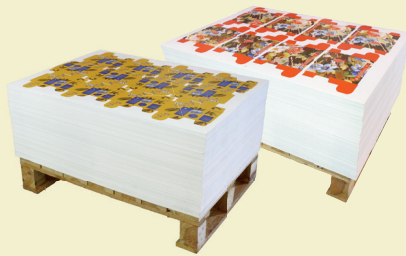


No.1 Workflow for short-run Folding Cartons



Short runs in Packaging are up-and-coming – calling for new solutions and an efficient production. The cutting-edge KAMA solutions provide the complete workflow for value added finishing for both offset and digital prints.

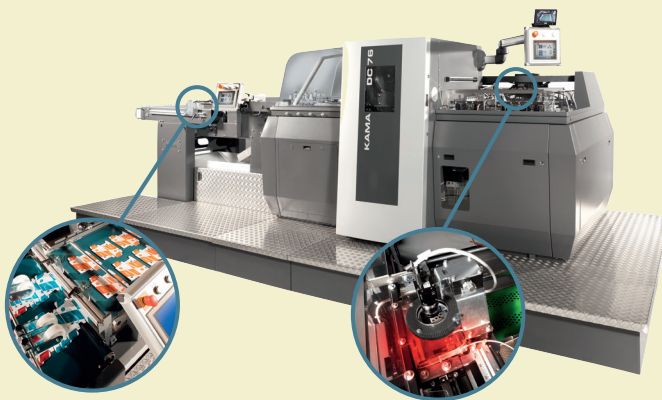
Printing and Varnishing



Any digital or offset press

- › For all kinds of prints: KAMA Die Cutters precisely finish sheets of all printing presses up to B2 format – no matter if printed digitally or offset
- › KAMA Finishing Die Cutters are also available for B3 format

Die Cutting and Stripping + Blanking



Versatile KAMA DC 76 ASB

- › Fast job change
- › AutoRegister aligns each sheet to a print mark for highly precise finishing
- › Tool-free (!) Stripping + Blanking with inline KAMA SBU
- › Hot foil or hologram stamping system as option

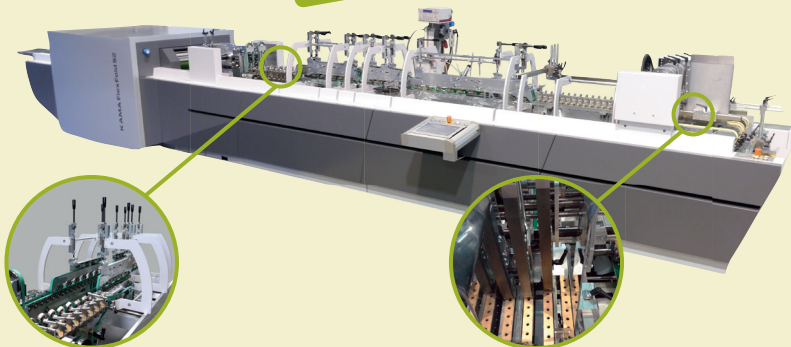


Network Integration
via KAMA Cockpit



Folding + Gluing

NEW



Game-changing KAMA FlexFold 52

- › Folder Gluer with automated set-up of the complete production line
- › Fast job change with the unique KAMA APA-system (patent-pending)
- › For straight-line folding cartons, automatic boxes (crash-lock) and slip-lid boxes



Network Integration
via KAMA Cockpit

